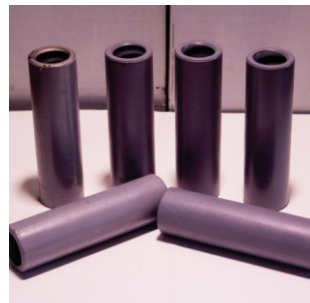
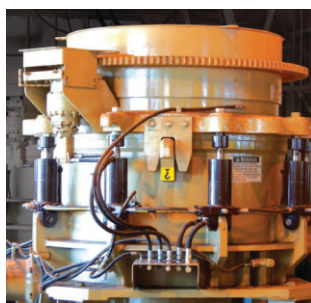
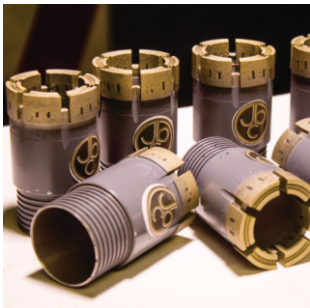
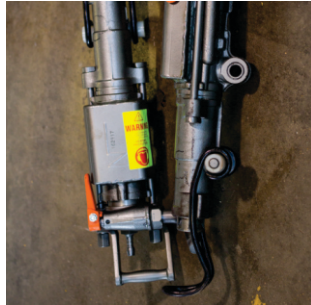




JACOB BETHEL CORPORATION
(ZIMBABWE) (PRIVATE)
LIMITED (JBC),

C O M P A N Y P R O F I L E









OVERVIEW

Jacob Bethel Corporation (Zimbabwe) (Private) Limited (JBC), is a leading manufacturer and supplier of high quality products and services to the mining, quarrying, construction and other industries in the Sub-Saharan region.

Recently the company ventured into the petroleum Industry and become a distributor of Global Lubricants Brands (Voyager and Gazpromneft) and Liquefied Petroleum Gas(LPG).

The company is ISO and SAZ certified (**SAZ ISO 9001:2008 and SAZ ISO 14001:2004.**)

JBC is comprised of **four divisions i.e**

- **Bulawayo (Mineral Processing Materials Handling Equipment)**
- **Harare Divisions (Drilling Products.)**
- **Lubrication and Gas division based in Harare and Bulawayo respectively**
- **Bitumen**

JBC Bulawayo manufactures crushing, screening, milling and conveying equipment, spares and services in Zimbabwe.

JBC Harare is a leading supplier and distributor of coring, soft and hard rock tools, ancillary equipment and services to the mining, quarrying and civil engineering sector.

JBC Oil and Gas is a leading supplier of Lubricants ,LPG and Bitumen



JACOB BETHEL CORPORATION
(ZIMBABWE) (PRIVATE) LIMITED (JBC),



COMPANY HISTORY

JBC Harare originated from **Boart Long Year (Zimbabwe) Limited** which was founded in 1959. BoartLong Year(Zimbabwe) was formerly owned by Anglo American Corporation. The same used to provide services to all **Anglo American mines and companies.**

JBC Bulawayo originated from **Samuel Osborn Engineering**, which was founded in 1948 and operated as a division of **Boart Longyear (Zimbabwe) Limited.**

Current staff compliment is at 140 individuals including the management team

Trade Name

JACOB BETHEL CORPORATION (ZIMBABWE) (PRIVATE) LIMITED
(Formerly Boart Longyear Zimbabwe Limited)

Vision, Mission and Values

Vision:

To be the premier engineering firm in Africa.

Mission:

To supply industry specifically the mining, quarrying and construction sector with technically superior, quality products and services.



JACOB BETHEL CORPORATION
(ZIMBABWE) (PRIVATE) LIMITED (JBC).

VALUES

Commitment

We are committed to efficient and effective service .

Accountability

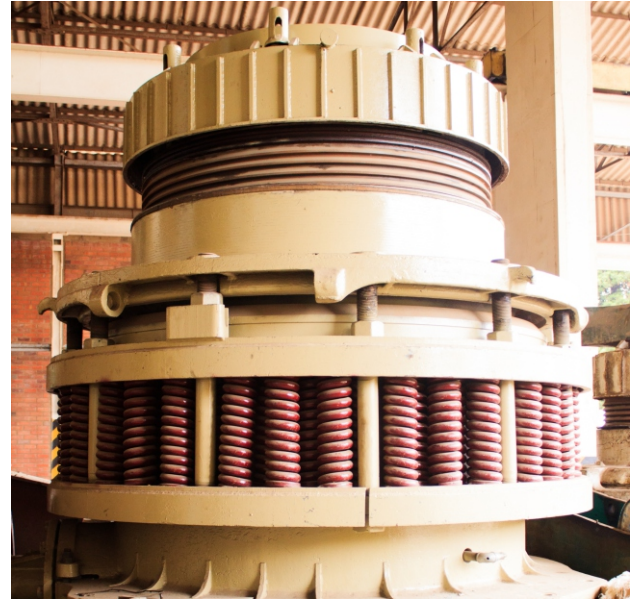
We are accountable to all our stakeholders.

Team work

We value our human capital and push for greater cooperation within the organization.

Innovation

We deliberately and continuously generate and pursue creative ideas that bring value to our stakeholders.





BUSINESS LINES

1) JBC Engineering Harare

Our Services & Products

- Integral drill steel
- Taper steel
- Threaded button bits
- Blade bits
- Taper bits
- Button reamers
- Impregnated diamond
- Crowns and reamer shells
- Coal borers
- Hoses and hose fings
- Extension equipment.
- SECO rock drill machines
- Diamond drilling machines
- (Kempie, metre eater, LM, LF range) and spares



**JACOB BETHEL CORPORATION
(ZIMBABWE) (PRIVATE) LIMITED (JBC),**



BUSINESS LINES

2) JBC Engineering Bulawayo

Our Services & Products

- Crushing and conveying equipment
- Mineral processing equipment
- Screens feeders
- Coal processing equipment
- Roof support products
- Belt fasteners
- LHDs and drill rigs



**JACOB BETHEL CORPORATION
(ZIMBABWE) (PRIVATE) LIMITED (JBC).**



JACOB BETHEL CORPORATION
(ZIMBABWE) (PRIVATE) LIMITED (JBC).



BUSINESS LINES

3) Liquefied Petroleum Gas(LPG)

Liquefied Petroleum Gas (LPG) is also known as propane or butane. LPG is flammable in nature and mixture of hydrocarbon gases. The boiling point of LPG is below room temperature, and it could be easily evaporated at normal temperature and pressure.

LPG is commonly imparted in pressurized steel vessels. They are usually filled up to 80 – 85% of their capacity to permit for thermal expansion of the contained liquid.

LPG is produced by petroleum refining, and is mainly obtained from fossil fuel sources, manufactured during the petroleum refining (crude oil), or obtained from petroleum or natural gas streams, as they come out from the ground.

It is commonly used as fuel in cooking equipment, heating appliances, and vehicles. Moreover, it is increasingly used as a refrigerant and an aerosol propellant, in the place of chlorofluorocarbon, in order to reduce damage to the ozone layer.

Bulawayo Site

Currently JBC has probably the single biggest storage facility in Bulawayo, with carrying capacity of 67tonnes.

There is scope to grow the business to Harare and the rest of the country in the near future



JACOB BETHEL CORPORATION
(ZIMBABWE) (PRIVATE) LIMITED (JBC).





BUSINESS LINES

4) Lubricants Division

Lubricants originate from the refining and processing of Crude Oil. The refining process is based on the principle of Distillation. Crude Oil components have different densities and boiling points so it is possible to separate them into different fractions depending on their boiling points hence Fractional Distillation.

BRANDS

JBC Lubricants has partnered with ADNOC Lubricants and OILY SA (Gazpromneft).

a) ADNOC History

Oil was first discovered in the United Arab Emirates in 1958, at the Murban Bab Oil Field, following an extensive 30-year search. Within the next 22 years more and more fields were discovered and exploited. Then, in 1971, as revenues from oil production started to grow, the late Sheikh Zayed bin Sultan Al Nahyan established the Abu Dhabi National Oil Company (ADNOC).

In the last 45 years, ADNOC has been the principle catalyst of growth in the emirate. Today, they manage and oversee production of around 3 million barrels of oil per day - which places us among the largest oil producers in the world. The company has expanded its portfolio to include sophisticated refining and petrochemicals businesses; an extensive network of gas and petrol service stations, and a modern transportation fleet that includes LNG and LPG carriers, oil and chemical tankers, bulk carriers and container vessels.



JACOB BETHEL CORPORATION
(ZIMBABWE) (PRIVATE) LIMITED (JBC),



PRODUCTS

Passenger cars and Light Trucks

- Voyager Gold
- Voyager Silver
- Voyager Bronze
- Voyager SJ

Heavy Duty Diesel Lubricants

- Voyager Ultra Syn
- Voyager Ultra 15W/40
- Voyager Plus
- Voyager HPSD
- Voyager Universal S3+
- Voyager Universal S3
- Voyager HD
- Voyager STUO
- Voyager RR

Automotive Gear Oils

- Gear Oil GX
- Gear Oil GP
- Gear Oil GX

Transmission Fluids

- Transmission Oil T4
- Automatic Transmission Fluid

Industrial Lubricants

- Industrial Gear Oil
- Transformer Oil
- General Purpose Oil
- Compressor Oil
- Heat Transfer Oil
- Soluble Cutting Oil
- Hydraulic



JACOB BETHEL CORPORATION
(ZIMBABWE) (PRIVATE) LIMITED (JBC),







BUSINESS LINES

b) GAZPROMNEFT

Gazpromneft Lubricants Ltd is a subsidiary of Gazprom Neft JSC producing and marketing a wide range of engine, gear, hydraulic and industrial lubricants and greases. The company owns and operates five production facilities in Russia, Italy and Serbia, with annual capacity of 450,000 tons of high quality lubricants, greases and specialty fluids. Gazpromneft Lubricants' management system is certified under ISO 9001:2008, ISO 14001:2004 and OHSAS 18001:2007.

The Company partners top R&D institutions and the world's leading additives manufacturers. Being a looking-forward and fast-growing company, Gazpromneft Lubricants has formed a unique resource base and is aiming to become one of the global market leaders in technology, marketing and service within the high performance lubricants, greases and technical fluids. Today, it offers more than 400 various kinds of lubricants and greases for all the market segments.

GAZPROMNEFT LUBRICANTS OFFERS

- Premium Commercial Vehicle Lubricants
- Premium Passenger Vehicle Lubricants
- Quality automotive lubricants for passenger and commercial vehicles
- Industrial lubricants and greases



JACOB BETHEL CORPORATION
(ZIMBABWE) (PRIVATE) LIMITED (JBC),



- Gazpromneft Premium C3 5W-40
 - Gazpromneft **Premium L 15W-40**
 - Gazpromneft Premium L 20W-50
 - Gazpromneft Super 10W-40
 - Gazpromneft **Super 15W-40**
 - Gazpromneft Standard 20W-50
-
- Gazpromneft **Diesel Premium 15W-40**
 - Gazpromneft Diesel Prioritet 15W-40
 - Gazpromneft **Diesel Extra 15W-40**
 - Gazpromneft GL-4 80W-90
 - Gazpromneft GL-5 80W-90
 - Gazpromneft **Super T-3 (85W-90)**
-
- Gazpromneft GL-5 85W-140
 - Gazpromneft ATF DX II
 - Gazpromneft **ATF DX III**
 - Gazpromneft Compressor S Synth 46
 - Gazpromneft Reductor CLP 150
 - Gazpromneft Reductor CLP 220
-
- Gazpromneft **Reductor CLP 320**
 - Gazpromneft Hydraulic HLP 46
 - Gazpromneft **Hydraulic HLP 68**
 - Gazpromneft **Grease L EP 2**
 - Gazpromneft Grease LX EP 2



- Gazpromneft Grease L Moly EP 2
- Gazpromneft **Metalgrease AC 2**
- Gazpromneft Antifreeze BS 40
- Gazpromneft Antifreeze SF12+ 40

Industrial Lubricants and Greases (Summary)

- Hydraulic oils
- Mobile hydraulic oils
- Multi-purpose industrial lubricants
- Rolling mill lubricants
- Quenching oils
- Paper-making machine lubricants
- Turbine oils
- Compressor oils
- Gear oils
- Slideway oils
- Heat transfer oil
- Greases





G-Energy Products

G-Energy F Synth 5W-30

- G-Energy F Synth 5W-40
- G-Energy Expert L 10W-40
- G-Energy Expert G 15W-40
- G-Energy Expert G 20W-50
- G-Energy F Synth EC 5W-30
- G-Energy F Synth Far East 5W-30
- G-Energy Service Line W 5W-30
- G-Energy Service Line GMO 5W-30
- G-Profi MSI Plus 15W-40
- G-Profi MSH 15W-40
- G-Profi MSF 15W-40
- G-Profi GT 10W-40
- G-Profi MSJ 15W-40
- G-Truck GL-5 80W-90
- G-Truck GL-4/GL-5 80W-90
- G-Truck GL-5 85W-140
- G-Special UTTO 10W-30
- G-Special STOU 10W-40
- G-Special TO-4 30
- G-Energy Expert DOT4
- G-Garden Chain & Bar



JACOB BETHEL CORPORATION
(ZIMBABWE) (PRIVATE) LIMITED (JBC),



JBC Oil & Gas
Jacob Bethel Corporation Oil and Gas



JACOB BETHEL CORPORATION
(ZIMBABWE) (PRIVATE) LIMITED (JBC),



BITUMEN

5) Bitumen is a dense, highly viscous, petroleum-based hydrocarbon that is found in deposits such as oil sands and pitch lakes (natural bitumen) or is obtained as a residue of the distillation of crude oil (refined bitumen). In some areas, bitumen is often called asphalt, though that name is almost universally used for the road-paving material made from a mixture of gravel, sand, and other fillers in a bituminous binder. Bitumen is also frequently called tar or pitch—though, properly speaking, tar is a byproduct of the carbonization of coal and pitch is actually obtained from the distillation of coal tar.

Bitumen is defined by the U.S. Geological Survey as an extra-heavy oil with an API gravity less than 10° and a viscosity greater than 10,000 centipoise. At the temperatures normally encountered in natural deposits, bitumen will not flow; in order to be moved through a pipe, it must be heated and, in some cases, diluted with a lighter oil. It owes its density and viscosity to its chemical composition—mainly large hydrocarbon molecules known as asphaltenes and resins, which are present in lighter oils but are highly concentrated in bitumen.

In addition, bitumen frequently has a high content of metals, such as nickel and vanadium, and nonmetallic inorganic elements, such as nitrogen, oxygen, and sulfur. Depending on the use to which bitumen is put, these elements may be contaminants that have to be removed from the finished product.

By far most refined bitumen is used in paving asphalt and roofing tiles, as is a large amount of natural bitumen. However, most of the bitumen extracted from Canada's oil sands is upgraded into synthetic crude oil and sent to refineries for conversion into a full range of petroleum products, including gasoline.



JACOB BETHEL CORPORATION
(ZIMBABWE) (PRIVATE) LIMITED (JBC),





BITUMEN

In history Bitumen was used to bind building materials together, as well as to line the bottoms of ships. Ancient civilizations traded the material. Herodotus, a fifth century BC Greek historian, claimed that the walls of ancient Babylon contained bitumen.

Bitumen oxidizes, which can leave the asphalt brittle and result in it cracking.

Naturally Occurring Bitumen

Bitumen is also a term used to refer to oil sands or partially consolidated sandstone containing a naturally occurring mixture of sand, clay, and water, saturated with a dense and extremely viscous form of petroleum. Bituminous sands are extremely abundant in Canada, especially in province of Alberta, where rising oil prices have made it economical to extract petroleum from these sands on a large scale

Options

70/100

80/100



JACOB BETHEL CORPORATION
(ZIMBABWE) (PRIVATE) LIMITED (JBC),





BITUMEN

In history Bitumen was used to bind building materials together, as well as to line the bottoms of ships. Ancient civilizations traded the material. Herodotus, a fifth century BC Greek historian, claimed that the walls of ancient Babylon contained bitumen.

Bitumen oxidizes, which can leave the asphalt brittle and result in it cracking.

Naturally Occurring Bitumen

Bitumen is also a term used to refer to oil sands or partially consolidated sandstone containing a naturally occurring mixture of sand, clay, and water, saturated with a dense and extremely viscous form of petroleum. Bituminous sands are extremely abundant in Canada, especially in province of Alberta, where rising oil prices have made it economical to extract petroleum from these sands on a large scale

Options

70/100

80/100



JACOB BETHEL CORPORATION
(ZIMBABWE) (PRIVATE) LIMITED (JBC),



DIRECTORS

- Doug Munatsi
- Teddy Gazi
- Blessing Munatsi (Executive)

BANK REFERENCES

Bank National Merchant

Bank Address 7-9 Plymouth Road, Southerton, Harare, Zimbabwe
 Contact Phone No. +263 772908975; +263 4773977; +263 4775150
 Account Executive- Name Farai Nyambiya
 Account Executive- Email farain@nmbz.co.zw

Bank Barclays Bank

Address Cnr Birmingham & Paisley Road, Southerton, Harare, Zimbabwe
 Contact Phone No. +263 4754470-6
 Corporate Manager's Assistant- Name Patricia Chiwira
 Corporate Manager's Assistant- Email patricia.chiwira@barclays.com

Bank MBICA Bank

Address 61 Plumtree Road, Belmont, Bulawayo
 Contact Phone +263 9460305
 Banker- Name Melford Mombe
 Personal Banker- Email MelfordM@mbica.co.zw

WORKFORCE

Jacob Bethel Corporation (Zimbabwe) Limited has a team managing the company under the leadership of the Managing Director.

Blessing Vee Munatsi Managing Director (BCompt, MBA)

Innocent Zvarevashe Engineering Manager (BEng)

Thabo Ngwenya Finance Manager (BCompt, ACCA)

Maxton Makwangwala Marketing (BCompt, IOBZ)

Michael Mubatsa Business Development Manager Bsc Economics, IOBSA, Msc Economics





JACOB BETHEL CORPORATION
(ZIMBABWE) (PRIVATE)
LIMITED (JBC),

PHYSICAL ADDRESS

Head Office and Harare Division
Jacob Bethel Corporation
(Zimbabwe) (Private) Limited Harare
132 Cnr Seke / Stevenson Roads
Graniteside
Harare

BULAWAYO DIVISION

No 7 Dalny Street
Belmont, Bulawayo
Zimbabwe

POSTAL ADDRESS

P.O. Box 3311
Harare.
Tel:+263 (4) 770210 - 7, 770209
Fax:+263 (4) 770208 / 752140



JBC Oil & Gas

Jacob Bethel Corporation Oil and Gas